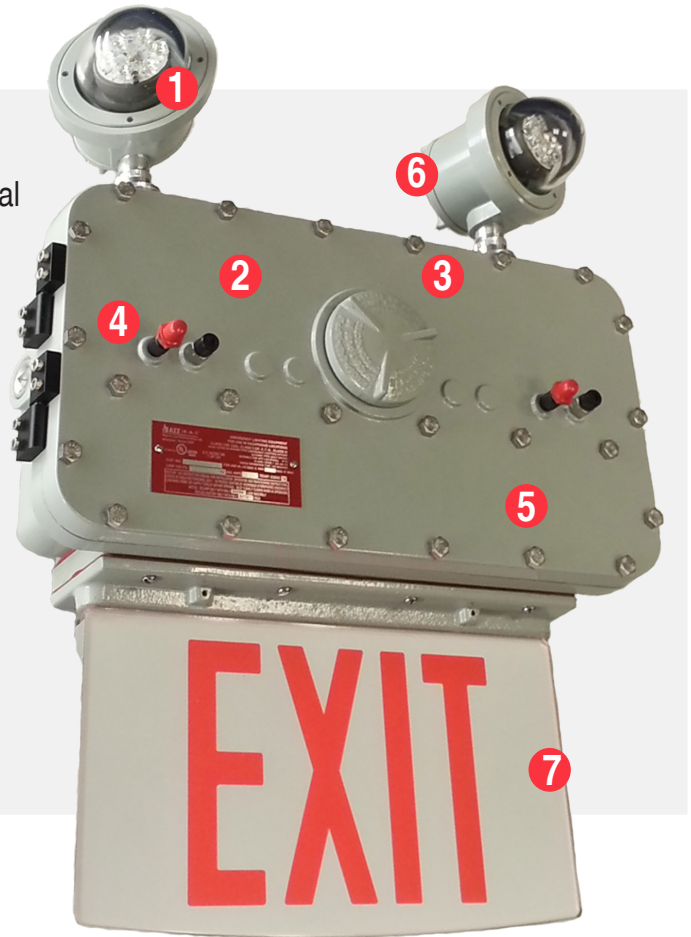


XPEH LED

Explosion Proof LED Emergency Light & Exit Sign

Key Features:

- 1 Two high lumen spot lights can be adjusted in horizontal and vertical planes
- 2 Independent battery backup system for exit signs and spotlights
- 3 Unit can power up to two optional remote spot lights
- 4 Field replaceable LED circuit boards and drivers with quick disconnects
- 5 Emergency battery back-up integral to sign (no additional enclosure required)
- 6 3-hour emergency operation
- 7 Edge-lit sign



Additional Features:

- Wall, pendant and end mounting options
- Captive, hinged-access door
- Wide and narrow-beam optics available
- Separate push-to-test and pilot light for local and remote heads
- Separate sealed NiCad batteries for exit sign
- Alternate exit legend and languages available
- Single- or double-sided option
- Three 1" NPT hubs
- Red or green LED options

Standard Materials:

- Body: A360 aluminum (less than .4% copper content) with baked-on gray epoxy finish
- Gasket: One-piece neoprene
- Sign: Acrylic
- Hardware: Stainless steel

Catalog Number Logic

XPEH-1-R-DT-2-2-XX

1
2
3
4
5
6
7

- 1 BASIC LUMINAIRE**
XPEH LED
Class I, Division 1, Groups C & D
Class II, Division 1, Groups E, F & G
Class III
Class I, Zone 1, Groups IIA, IIB,
UL 844, 1598, 8750, 924
UL 1598A Marine Outside Type (Salt Water)
USCG Regulation 46 CFR Subparts 111.75-15 (e) & 112.43
CUL
IP65
NEMA 4X
Suitable for Wet Locations

- 2 NUMBER OF FACES**
1 = Single Face
2 = Double Face

- 3 LEGEND COLOR**
R = Red
G = Green

- 4 VOLTAGE / FREQUENCY**
DT = 120/277V 60HZ
24 = 220-240V 50HZ

- 5 INSTALLED HEADS**
0 = None
1 = One
2 = Two

- 6 REMOTE HEADS¹**
0 = None
1 = One
2 = Two
3 = Three
4 = Four

- 7 OPTIONS²**
N = Narrow Beam Optics
W = Wide Beam Optics
X = EXIT Legend in other languages
Language must be specified

Combinations Available		
Installed	Remote	Drivers
2	0	1
1	1	1
0	2	1
2	2	2
1	3	2
0	4	2

Maximum Input Power

XPEH Emergency Light with:

Red Exit Sign & 2 LED heads - 6.5 W
Red Exit Sign & 4 LED heads - 10.5 W

Green Exit Sign & 2 LED heads - 7 W
Green Exit Sign & 4 LED heads - 11W

¹XPEH Series emergency lights with remote head option are provided with extra LED driver. Remote heads can only be wired to the emergency fixtures with remote head option. LED heads are furnished with 1/2"-14 NPT male hub, must be installed on suitably listed explosion proof junction box not provided by RAL.

²Consult Factory for pricing.

Maximum Output Data

Each Remote Head:

Voltage: 22V DC. max.
Current: 0.225 A (225mA)
Max. Power: 5 W

Certification Guide

XPEH Series Emergency Combo with:	Ambient Temperature Range	Class I, Division 1 Groups C & D	Class II, Division 1 Groups E, F & G Class III	Simultaneous Presence Class I & II	UL 1598A Marine	CUL
Green Exit Sign	10° C to 35° C	T6	T6	T6	Yes	Yes
Red Exit Sign	10° C to 45° C	T6	T6	T6	Yes	Yes

LED
XPEH

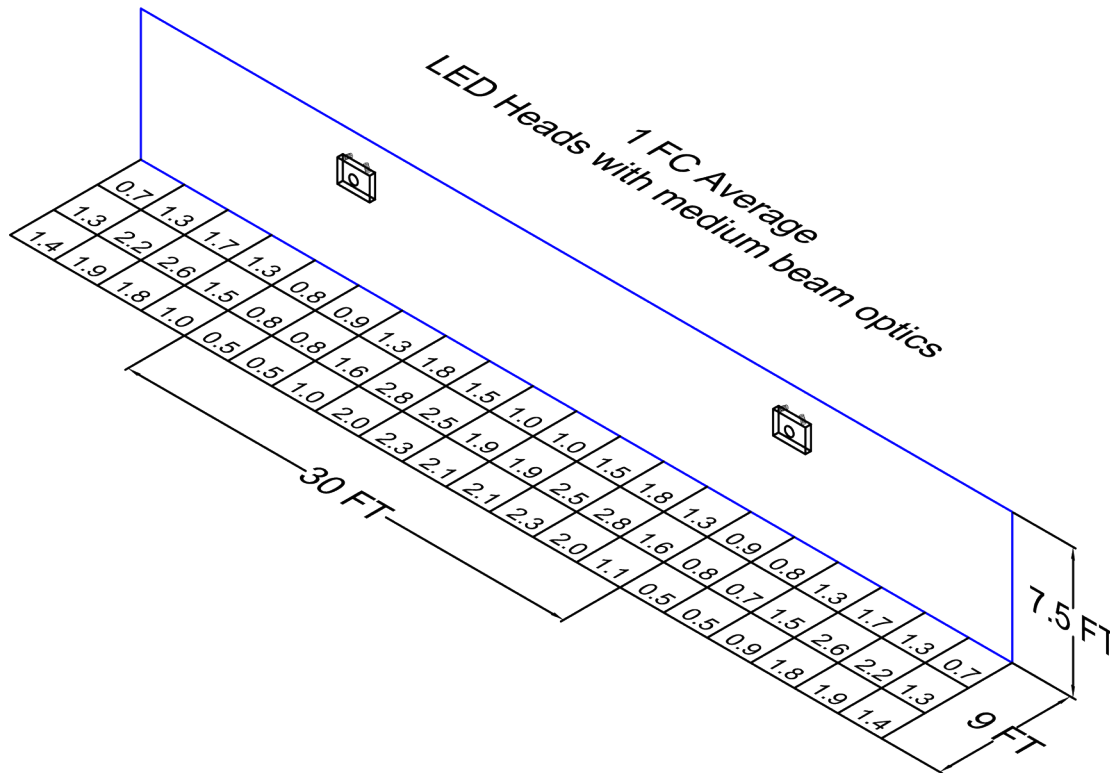
Explosion Proof LED Emergency Light & Exit Sign

Photometric Data

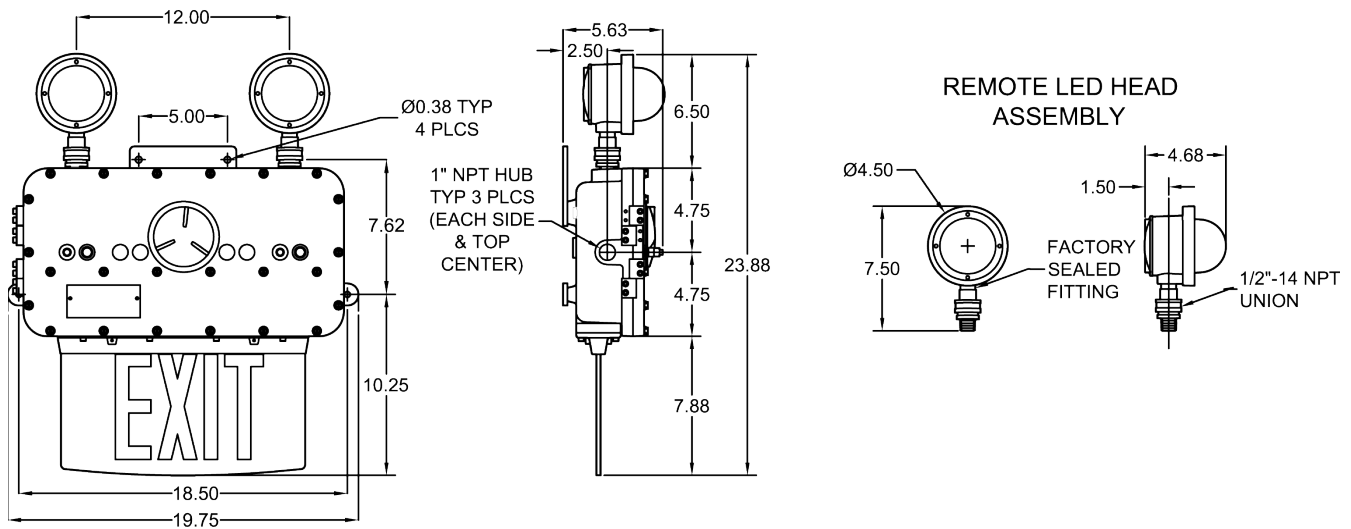
XPEH LED head with medium beam optics:

Total Lumens per Head	420.78
Output Watts per Head	4.83
Efficacy (Lumens/Watts)	87.12
CRI	72
CCT	5672

Average Initial Footcandles at the Floor	1.49
Maximum Initial Footcandles at the Floor	2.80
Minimum Initial Footcandles at the Floor	0.50
Maximum to Minimum Ratio	5.60



XPEH Series Fixture Dimensions (inches)



XPEH SERIES	Shipping Weight	Shipping Volume
Emergency Combo	40.5 lbs.	3.1 cu. ft.
Emergency Combo with Remote Heads Option*	43.5 lbs.	3.1 cu. ft.
Remote Head Assembly	3.5 lbs.	0.27 cu. ft.

* Remote Head Assemblies are shipped separately.
(Additional weight of the emergency light is due to extra driver for remote heads.)